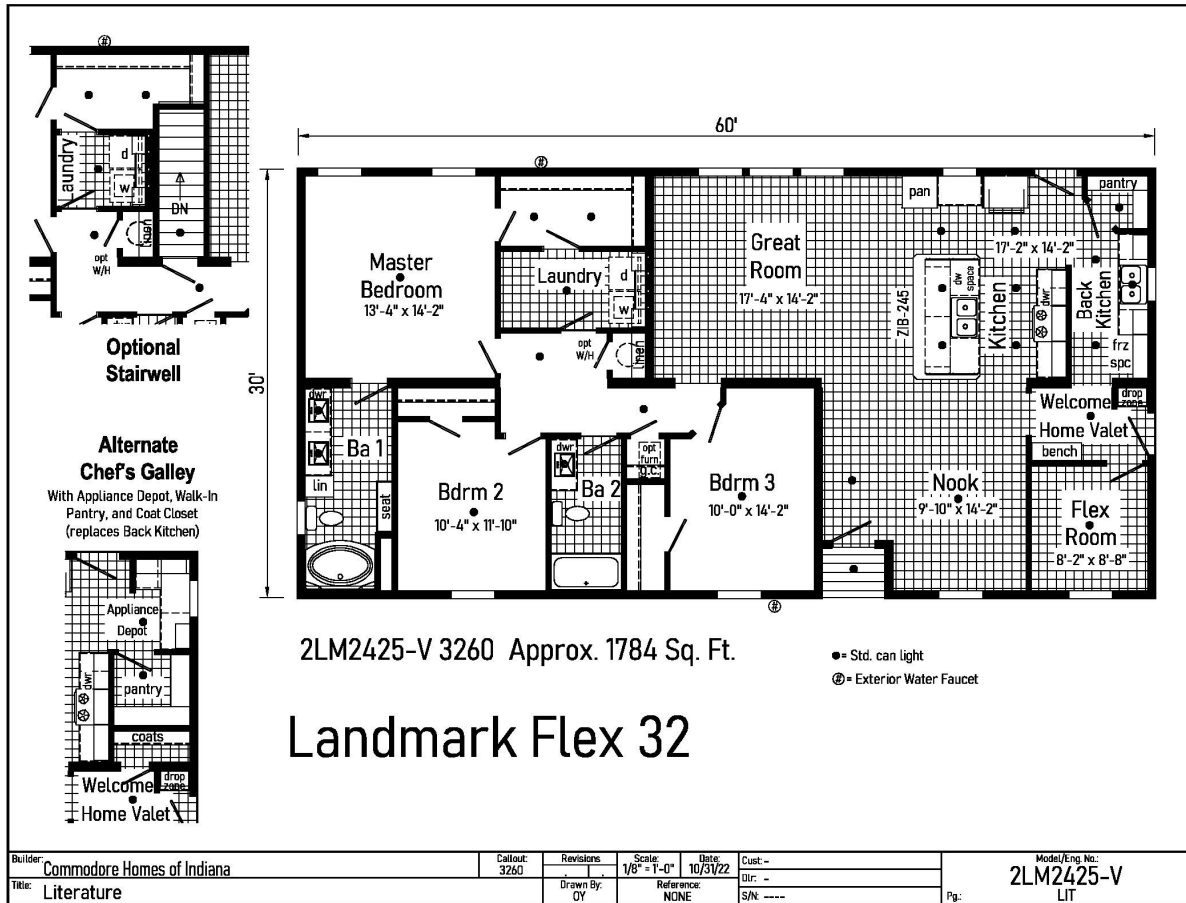


# PRINTABLE INFO SHEET

Series: Landmark Flex  
 Model: 2LM2425-V Landmark Flex 32



## About This Model

Style: Ranch / Bedrooms: 3 / Bathrooms: 2 / Square Feet: 1784

## CUSTOMER CONTACT

Notes: \_\_\_\_\_

\_\_\_\_\_

\_\_\_\_\_

\_\_\_\_\_

# PRINTABLE INFO SHEET

Series: Landmark Flex

Model: 2LM2425-V Landmark Flex 32



## Standards & Features

### Interior

- Smooth Drywall Throughout
- Flat Ceiling Throughout
- Stipple Ceiling
- Coveless Ceiling Joints
- 8' Sidewall Height
- Recessed LED Lighting
- Mortise Door Hinges
- Metal Interior Passage Sets
- Door Stops
- White 2 1/4" Door & Window Casing
- White 3" Baseboard Moulding
- White 2-Panel Doors
- Smoke Detectors with Battery Back-Up
- Wire Shelving in Guest Closet
- Brushed Nickel Interior Hardware & Lighting

### Exterior

- Gatsby Light at Front Door
- Gatsby Light at Rear Door
- GFI-Protected Exterior Receptacles at Doors
- Vinyl Dutch Lap Siding with Larger
- Starter Strip to Cover Sill Plate
- O.S.B. Sheathing
- 5/12 Roof with 10" Eaves
- 40# Roof Load
- Architectural Shingles
- Ridgevent Roof Ventilation System
- 3/0x6/8 6-Panel Fiberglass Front and Rear
- Door with Deadbolt Lock
- Heritage Vinyl Insulated Low-E Argon
- Windows with no grids

### Exterior (continued)

- Raised Panel Shutters on Front Door Side

### Kitchen

- Omit Appliances - Prep for Refrigerator,
- Gas Range, & Dishwasher
- Stainless Steel Range Hood Installed
- Stainless Steel Double Bowl Sink (33x22x8)
- One USB Receptacle

### Baths

- One Piece Fiberglass Tub/Showers
- Garden Tub/Shower-Master Bathroom
- Tub Overflows
- Anti-Scald Valves on Showers & Tubs
- 1.6 Gallon Per Flush Elongated Toilets
- China Stool, Tank, and Lid
- China Sinks with Overflows and Pop-Up
- Drains
- Double Lavs
- Drawer Bank (each bathroom)
- Lighted Vent Fan in Each Bath
- LED Ceiling Lights
- Pencil Edge Mirrors

### Cabinetry

- Hardwood Stiles
- 3/4 Overlay Hardwood Mission Flat
- Panel Cabinet Doors
- Evermore Custom Cabinetry
- Crown Moulding on Overhead Cabinets
- Transitional Cabinet Hardware
- 42" Overhead Cabinets
- Lined Overhead Cabinets

## CUSTOMER CONTACT

Notes:

---

---

---

---

# PRINTABLE INFO SHEET

Series: Landmark Flex

Model: 2LM2425-V Landmark Flex 32



## Standards & Features (continued)

### Cabinetry (continued)

- Adjustable Shelves in Overhead Cabinets
- Dovetail Drawer Construction
- 75#Drawer Guides
- Base and Center Shelf in Base Cabinets
- WilsonArt Laminate Countertops with Laminate Edging
- 4" WilsonArt Laminate Backsplash
- 36" High Vanities
- Base Shelf in Vanities
- Refrigerator Surround
- Washer/Dryer Overhead Cabinets

### Utilities

- 200 AMP Electrical Service
- 2nd Conduit
- Copper Wiring Throughout
- Perimeter Boots & Registers
- Deleted:
- Furnace
- Ceiling Air Return System
- Main Heat Trunk
- Thermostat Wire
- Omit Water Heater
- Structured Flow Brushed Nickel Faucets
- Main Water Line Shut-Off Valve
- Water Shut-Off Valves - Where Accessible
- Plumb and Wire for Washer
- Wire and Vent for Dryer
- Two Exterior Water Faucets
- Recessed Dryer Box (where applicable)

### Insulation

- R-19 Fiberglass Insulation in Walls
- R-38 Avg. Blown Insulation in Ceiling

### Flooring

- SHAW 15 oz. Carpet w/ ShawGuard Carpet Protector
- Rebond Carpet Pad with Tackstrip
- Carpet Installation
- No-Wax Vinyl Floor Coverings
- Entry Foyer Vinyl Flooring

### Bedrooms

- Recessed LED Lights
- Egress Window in Each Bedroom
- Wire Shelving in Wardrobes
- 4" LED Light in All Walk-In Closets

### Construction

- 2x10 Floor Joists 16" on Center
- 2x6 Exterior Walls 16" on Center
- 2x4 Interior Walls
- 40# Roof Load
- 32 wide Floor Stabilizer

### Available Options

- Basement Stairwell & Standard location only
- Shake It Up Carpet
- Lino per room in place of carpet
- Matching Vinyl Transition Strip
- Luxury Vinyl Plank shipped loose only
- 40 or 50 Gallon electric hot water heater
- Heating package (Furnace, return air (Optional trunk lines available) (Gas and Electric)
- Prep for On-site furnace installation

## CUSTOMER CONTACT

Notes:

---

---

---

---

# PRINTABLE INFO SHEET

Series: Landmark Flex

Model: 2LM2425-V Landmark Flex 32



## Standards & Features (continued)

### Available Options (continued)

- Prep for On-site Water Heater installation
- Ship loose duct material for Furnace
- Heat Ducts Installed
- Additional LED Can Lights
- Wire and Switch for Fan
- Ceiling Fan
- Wire for Electric Range
- Extra Exterior Recept
- All Optional Cabinet Color Choices (White Painted, Shadow Grey Painted, Deep Blue Painted)
- 60x32 Fiberglass Shower IPO standard Garden Tub Master Bath or ipo Tub/Shower Bath 2
- Upgrade Insulation &dash; Sidewall and Ceiling
- 4 Lite White Exterior Door IPO standard
- 2 Panel &frac12; Glass with Internal Blinds IPO standard
- Fire Door White IPO standard
- Full View Door with Internal Blinds ipo window
- Vinyl Sliding Glass Door
- Extra Shutters
- Optional Lineal ipo shutters and Extra Lineal
- Market Square siding
- 5/12 Roof Pitch 50# and 70# (70# requires 16 o.c.)
- Double Close Up Plastic
- Pearl Appliance package (Gas or Electric)
- SS Over the Range Microwave
- Prep for Microwave over range
- Additional 18 cu ft Black Refer with Ice for Back Kitchen
- Additional 20 cu ft Top Freezer Stainless Steel Refer with Ice for Back Kitchen

### Available Options (continued)

- Wine/Beverage Cooler for Entertainer Option
- Drape Package A
- All state required codes

## CUSTOMER CONTACT

Notes:

---

---

---

---