

PRINTABLE INFO SHEET

Series: Landmark Ultra
Model: 2LM2003R Ultra 6



About This Model

Style: Ranch / Bedrooms: 3 / Bathrooms: 2 / Square Feet: 1859

CUSTOMER CONTACT

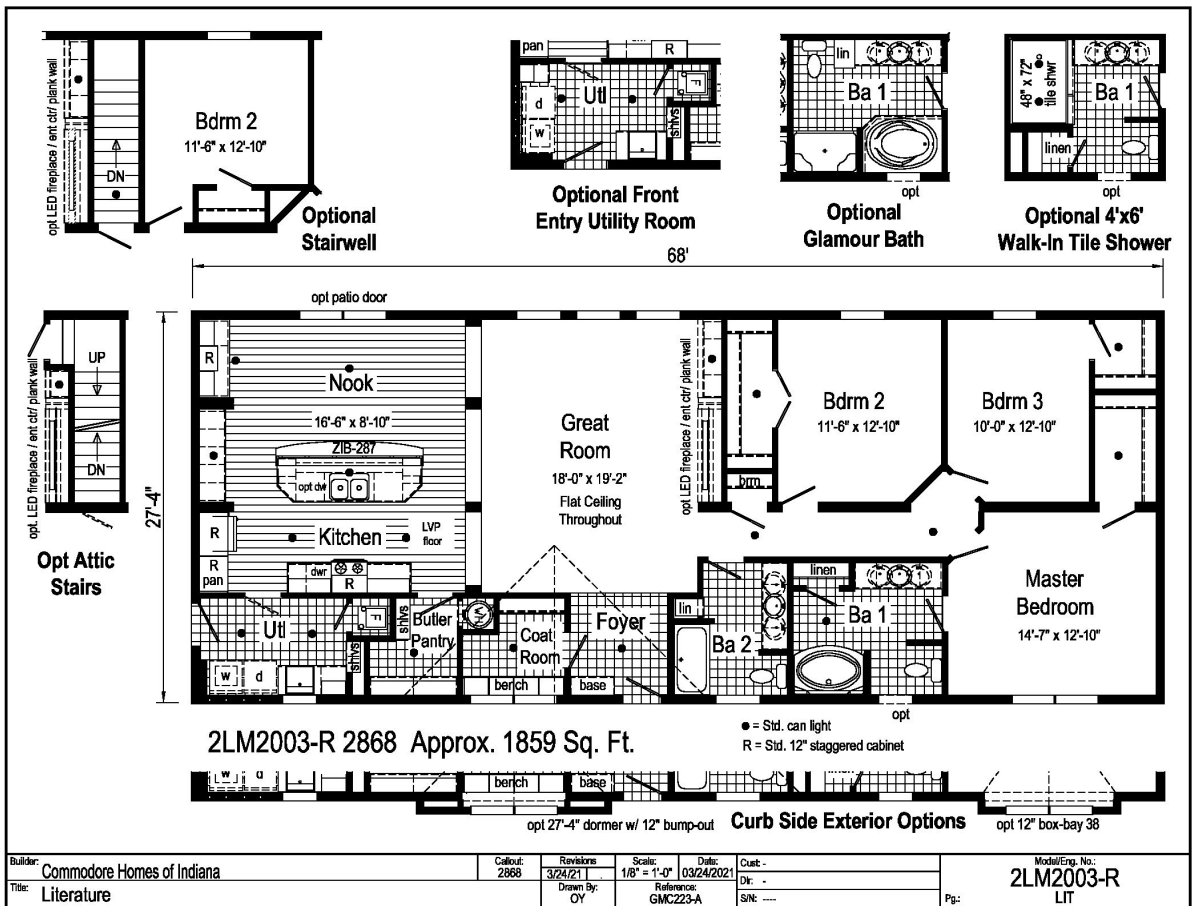
Notes:

PRINTABLE INFO SHEET

Series: Landmark Ultra
 Model: 2LM2003R Ultra 6



Floorplan



CUSTOMER CONTACT

Notes:

PRINTABLE INFO SHEET

Series: Landmark Ultra
Model: 2LM2003R Ultra 6



Standards & Features

Interior

- Smooth Drywall Throughout
- Flat Ceiling Throughout
- Stipple Ceiling
- Coveless Ceiling Joints
- 8' Sidewall Height
- Brushed Nickel 5-Arm Dining Room Light
- Recessed LED Lighting
- Mortise Door Hinges
- Metal Interior Passage Sets
- Door Stops
- 2 1/4" Door & Window Casing
- 3" Baseboard Moulding
- Smooth 6-Panel Doors
- Smoke Detectors with Battery Back-Up
- Wire Shelving in Guest Closet
- Brushed Nickel Interior Hardware and Lighting

Exterior

- Patina Coach Light at Front Door
- Patina Coach Light at Rear Door
- Two GFI-Protected Exterior Receptacle
- Vinyl Dutch Lap Siding with Larger Starter Strip to Cover Sill Plate
- O.S.B. Sheathing
- Fixed Roof with 10" Eaves (26'8" & 30') 16" Eaves (27'4")
- Ridgevent Roof Ventilation System
- 3/0x6/8 6-Panel Fiberglass Front and Rear Door with Deadbolt Lock
- MI Vinyl Insulated Low-E Windows (Gridless)
- Raised Panel Shutters on Front Door Side

Kitchen

- Whirlpool Deluxe 30" Gas Free Standing Range
- Power Range Hood with Light
- Whirlpool 18 Cubic Foot, No-Frost Refrigerator w/ Ice maker
- Stainless Steel Double Bowl Sink (33x22x8)
- Tight Mesh Shelving in Pantry
- One USB Receptacle

Baths

- One Piece Fiberglass Tub/Showers
- Garden Tub/Showers-Master Bathroom
- Tub Overflows
- Anti-Scald Valves on Showers & Tubs
- 1.6 Gallon Per Flush Elongated Toilets
- China Stool, Tank, and Lid
- China Sinks with Overflows and Pop-Up Drains
- Lighted Vent Fan in Each Bath
- 2-Arm Infinity Bath Lights
- Pencil Edge Mirrors

Cabinetry

- Hardwood Stiles
- 3/4 Overlay Hardwood Mission Flat Panel Cabinet Doors
- Evermore Custom Cabinetry (KCMA Certified)
- Crown Moulding on Overhead Cabinets
- Transitional Cabinet Hardware
- 30"/42" Staggered Wall Overhead Cabinets or 42" Overhead Cabinets
- Lined Overhead Cabinets
- Adjustable Shelves in Overhead Staggered Cabinets

CUSTOMER CONTACT

Notes:

PRINTABLE INFO SHEET

Series: Landmark Ultra
Model: 2LM2003R Ultra 6



Standards & Features (continued)

Cabinetry (continued)

Dovetail Drawer Construction
75#Drawer Guides
Base and Center Shelf in Base Cabinets
WilsonArt Laminate Countertops with
Laminate Edging
4" WilsonArt Laminate Backsplash
36" High Vanities
Base Shelf in Vanities
Bump-out Staggered Wall Cabinet over Range
Refrigerator Surround

Utilities

200 AMP Electrical Service
Copper Wiring Throughout
95 Plus Efficient Gas Furnace
- Perimeter Heat
- Woodgrain Furnace Door
- Fiberglass Heat Ducts
- Air Return System
Air Conditioning Thermostat with 5-Wires
40 Gallon Electric Water Heater with Pan
Structured Flow Brushed Nickel Faucets
Main Water Line Shut-Off Valve
Water Shut-Off Valves - Where Accessible
Plumb and Wire for Washer
Wire and Vent for Dryer
One Exterior Water Faucet
Recessed Dryer Box (where applicable)

Insulation

R-19 Fiberglass Insulation in Walls
R-38 Avg. Blown Insulation in Ceiling

Flooring

Choice of Various Styles of SHAW 16 oz.
Carpet w/ ShawGuard Carpet Protector
Rebond Carpet Pad with Tackstrip
Carpet Installation
No-Wax Vinyl Floor Coverings
Entry Foyer Vinyl Flooring

Bedrooms

Ceiling Lights
Egress Window Each Bedroom
Wire Shelving in Wardrobes
4" LED Light in All Walk-In Closets

Construction

2x10 Floor Joists 16" on Center**
2x6 Exterior Walls 16" on Center**
2x4 Interior Walls
40# Roof Load
32 wide Floor Stabilizer

CUSTOMER CONTACT

Notes:
